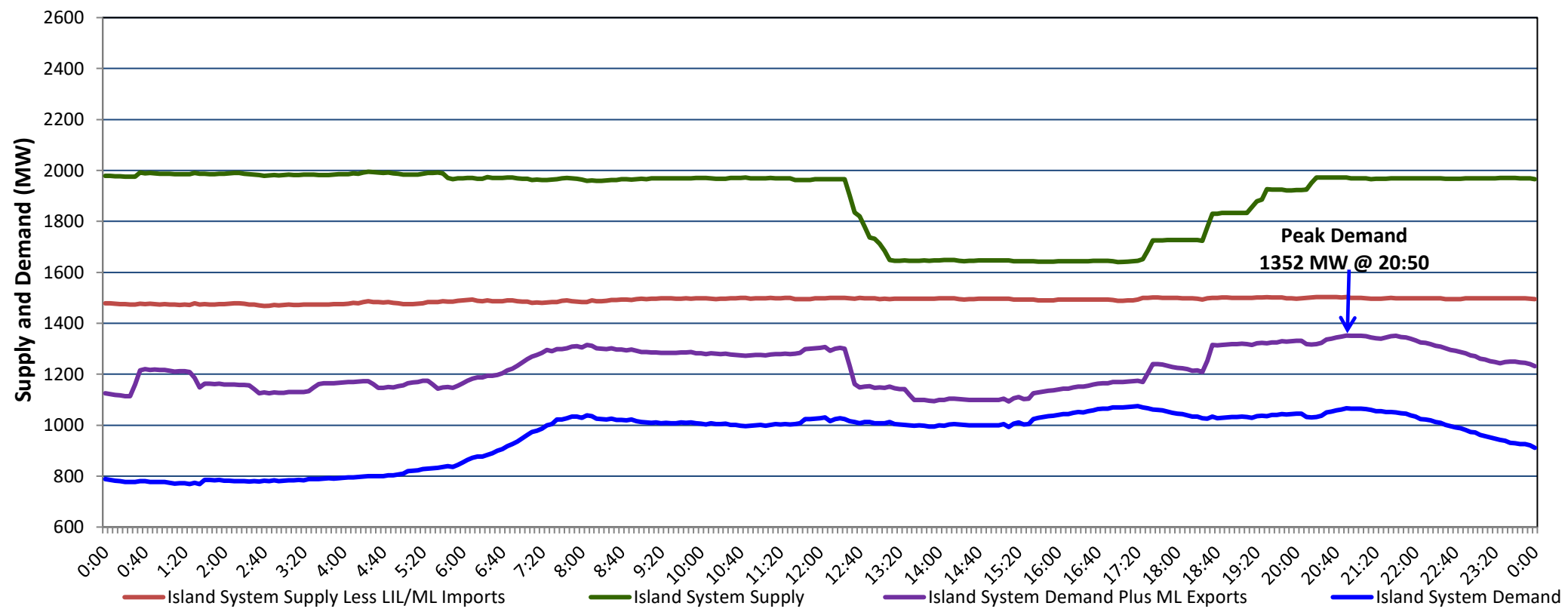


**Newfoundland Labrador Hydro (NLH)
Supply and Demand Status Report Filed Wednesday, May 10, 2023**

**Section 1
Island Interconnected System Supply, Demand & Exports
Actual 24 Hour System Performance For Tuesday, May 09, 2023**



Supply Notes For May 09, 2023

1,2

- A As of 0701 hours, March 06, 2023, Upper Salmon Unit unavailable due to planned outage (84 MW).
- B As of 2005 hours, April 02, 2023, Bay d'Espoir Unit 3 unavailable due to planned outage (76.5 MW).
- C As of 0006 hours, April 09, 2023, Holyrood Unit 3 unavailable due to planned outage (150 MW).
- D As of 0937 hours, May 01, 2023, Bay d'Espoir Unit 4 unavailable due to planned outage (76.5 MW).
- E As of 1035 hours, May 02, 2023, Holyrood Unit 1 unavailable due to planned outage (170 MW).
- F At 0801 hours, May 09, 2023, Hawkes Bay Diesel Plant unavailable due to planned outage (5 MW).
- G At 0807 hours, May 09, 2023, Hawkes Bay Diesel Plant available (5 MW).

**Section 2
Island Interconnected Supply and Demand**

Wed, May 10, 2023	Island System Outlook ³	Seven-Day Forecast	Temperature (°C)		Island System Daily Peak Demand (MW)	
			Morning	Evening	Forecast	Adjusted ⁷
Available Island System Supply: ⁵	1,992 MW	Wednesday, May 10, 2023	4	4	1,395	1,395
NLH Island Generation: ^{4,8}	1,135 MW	Thursday, May 11, 2023	3	5	1,065	1,065
NLH Island Power Purchases: ⁶	140 MW	Friday, May 12, 2023	5	6	1,010	1,010
Other Island Generation:	215 MW	Saturday, May 13, 2023	5	2	925	925
ML/LIL Imports:	502 MW	Sunday, May 14, 2023	7	6	915	915
Current St. John's Temperature & Windchill:	3 °C	Monday, May 15, 2023	4	8	995	995
7-Day Island Peak Demand Forecast:	1,395 MW	Tuesday, May 16, 2023	10	4	890	890

Supply Notes For May 10, 2023

3

- Notes:
1. Generation outages for running and corrective maintenance are included. These are not unusual for power system operations. They generally do not impact customer supply. The power system operators schedule outages to system equipment whenever possible to coincide with periods when customer demands are low and sufficient supply reserves are available. However, from time to time equipment outages are necessary and reserves may be impacted.
 2. Due to the Island system having no synchronous connections to the larger North American grid, when there is a sudden loss of large generating units there may be a requirement for some customer's load to be interrupted for short periods to bring generation output equal to customer demand. This automatic action of power system protection, referred to as under frequency load shedding (UFLS), is necessary to ensure the integrity and reliability of system equipment. Under frequency events have typically occurred 5 to 8 times per year on the Island Interconnected System and the resultant customer load interruptions are generally less than 30 minutes. With the activation of the Maritime Link frequency controller during the winter of 2018, UFLS events have occurred less frequently.
 3. As of 0800 Hours.
 4. Gross output including station service at Holyrood (24.5 MW) and improved NLH hydraulic output due to water levels (35 MW).
 5. Gross output from all Island sources (including Note 4).
 6. NLH Island Power Purchases include: CBPP Co-Gen, Nalcor Exploits, Rattle Brook, Star Lake, Wind Generation and capacity assistance (when applicable).
 7. Adjusted for curtailable load, market activities and the impact of voltage reduction when applicable.
 8. Due to limitations inherent in the design of combustion turbines, the output of combustion turbines may be reduced in the event that ambient temperatures exceed the threshold

**Section 3
Island Peak Demand Information
Previous Day Actual Peak and Current Day Forecast Peak**

Tue, May 09, 2023	Actual Island Peak Demand ⁹	20:50	1,352 MW
Wed, May 10, 2023	Forecast Island Peak Demand		1,395 MW

Notes: 9. Island Demand / LIL / ML Exports (where applicable) is supplied by NLH generation and purchases, plus generation owned and operated by Newfoundland Power and Corner Brook Pulp & Paper (Deer Lake Power, DLP).